

Fig 1. Neutrophil and platelet engraftment after allogeneic v autologous purged BMT. (A) Days to absolute neutrophil count > 500/ μ L for 2 consecutive days. Allogeneic group (—), n = 17; autologous group (---), n = 36. *P* = .001. (B) Days to platelet count > 30,000/ μ L without transfusion. Allogeneic group (—), n = 14; autologous group (---), n = 31. *P* = .007.

was gastrointestinal (mucositis). Hepatic toxicity was more frequent in the allogeneic group, whereas the incidence of all other toxicities was equal or lower for allogeneic than autologous patients. Overall, the percent of patients with grade 3 and 4 toxicity is comparable in the two groups: 70% versus 80%.

Acute GVHD occurred in 10 patients (50%) after allogeneic BMT, including eight with skin GVHD (grade I, n = 3; grade II, n = 3; grade III, n = 1; grade IV, n = 1), four with gastrointestinal GVHD (grade I, n = 3; grade II, n = 1), and three with hepatic GVHD (grade I, n = 1; grade II, n = 2). Only two patients had greater than grade II GVHD. One patient developed chronic skin GVHD.

Table 4. Nonhematologic Grade 3 and 4 Toxicities in the First 100 Days Post-BMT

Toxicity (site/measure)	Allogeneic (n = 20)		Autologous (n = 36)	
	No.	%	No.	%
Liver/AST, ALT, bilirubin	3	15	3	8.3
Pancreas/blood sugar	3	15	0	0
Renal/genitourinary	3	15	9	25
GI/stomatitis, diarrhea, vomiting	10	50	28	78
Pulmonary/function	2	10	6	16.7
Nervous system	1	5	2	5.5
Skin	1	5	4	11.1
Electrolytes/K	2	10	0	0
Total patients with toxicity	14	70.0	29	80.5

Abbreviation: GI, gastrointestinal.

PFS

The median follow-up duration for patients alive after BMT without progressive disease is 38 months (range, 15 to 45) for the allogeneic group and 41 months (range, 31 to 52) for the autologous group. The patient with only 15 months of follow-up data in the allogeneic group has been lost to follow-up. The PFS rate 4 years post-BMT is different for the two groups, although not significantly so at 25% for the allogeneic and 49% for the autologous patients (*P* = .051) (Fig 2). Limiting the comparison to the most homogeneous groups possible, those patients in CR at the time of BMT, three of nine allogeneic patients and six of 10 autologous patients are alive and progression-free, with no significant difference in 4-year PFS rates 33% and 60%, (respectively) (*P* = .11). If the com-

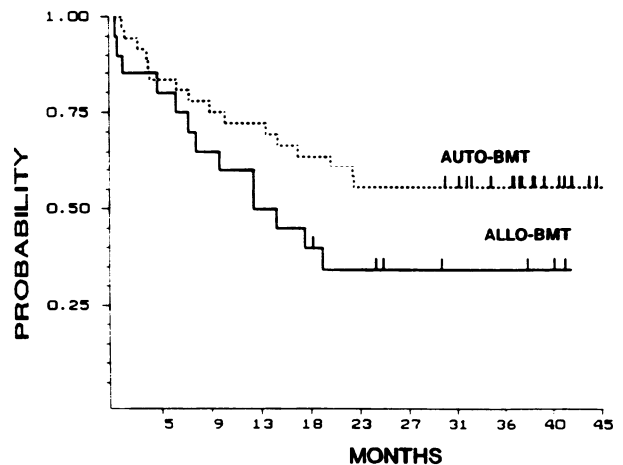


Fig 2. Estimated PFS after allogeneic v autologous purged BMT for neuroblastoma. Allogeneic group (—), n = 20; median follow-up, 38 months. Autologous group (---), n = 36; median follow-up, 41 months. *P* = .051.